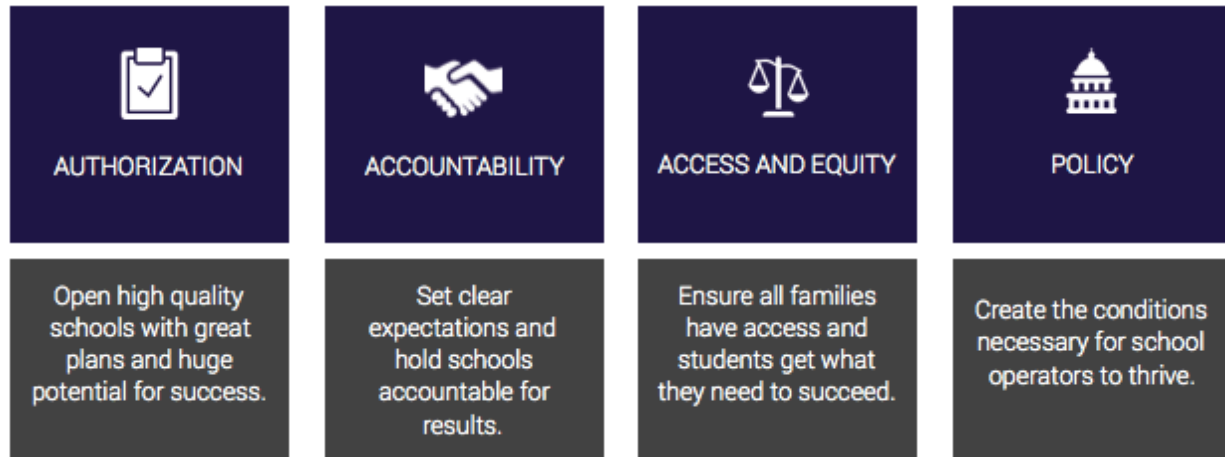


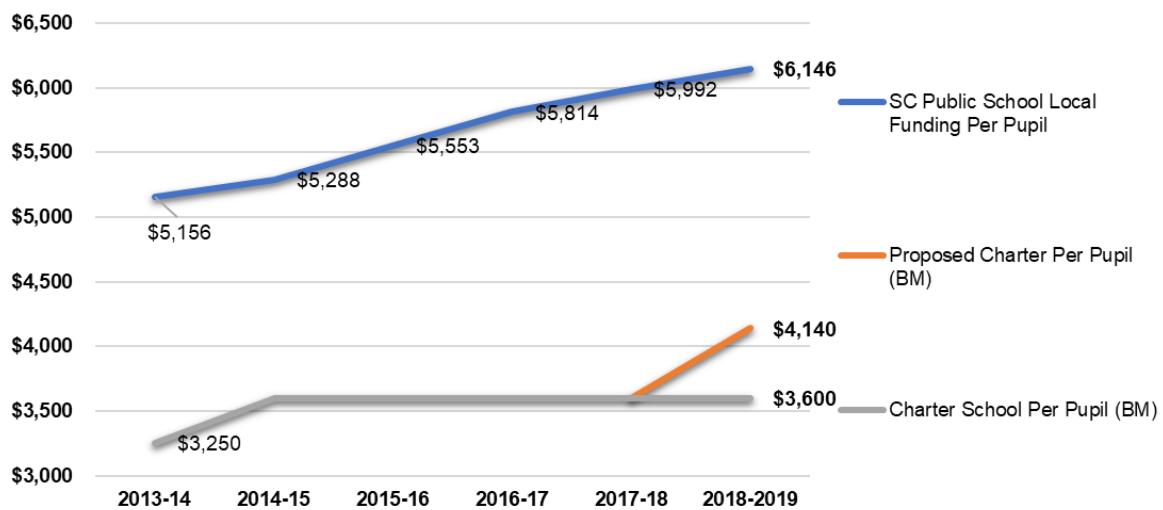
South Carolina Public Charter School District FY19-20 Proviso Request Summary

The SCPCSD prioritizes four key areas as it continues to build a vibrant portfolio of public charter schools:



The SCPCSD has approved two new state charter schools that are projected to open in school year 2019-20 and enroll approximately 380 additional students. In total, the SCPCSD anticipates 21,800 students will be attending 36 SCPCSD charter schools in August 2019.

According to data from Revenue and Fiscal Affairs, local funding for South Carolina public schools has increased by an estimated \$858 to \$6,146 per pupil since 2014-15 (a 16.2% increase). Over this 5-year period, state charter school proviso funding (local funding equivalent for state charter schools) has remained unchanged at \$3,600 for brick and mortar and \$1,900 for virtual schools while state charter schools continue to face rising pension, health care, teacher salary, and operating costs.



To ensure that SCPCSD public state charter school students are afforded equitable educational opportunities, it is important to close this funding gap. It is recommended that the per pupil as set forth in the SCPCSD proviso be increased by 15% to \$4,140 for brick and mortar students and to \$2,185 for virtual students. Based on projected enrollment, this 15% increase generates an overall proviso request of **\$98,724,042** (an increase of **\$17,157,680**).

FY18-19 Proviso Allocation	\$81,566,361
----------------------------	--------------



+ increase in students	\$4,280,631
+ 15% increase in proviso	\$12,877,049
Total FY19-20 Proviso Request	\$98,724,042

Even with the 15% increase in this proviso funding, SCPCSD brick and mortar (B&M) charter schools are projected to operate with approximately 22% less **total** per pupil revenue (\$10,640) than the average per pupil **operating revenue amount** for public schools in South Carolina (\$13,656). This lower per pupil total amount must cover all operating and capital costs for charter schools given that state charter schools do not have access to additional capital budgets whereas many public schools do see additional capital budget revenue funds.

Secondary requests

1. We request that the state charter school proviso language be amended to include a mechanism by which the per pupil funding amount for Brick & Mortar & Virtual charter school pupils be adjusted **annually** by a well-known and published inflation factor. As operating costs for charter schools continue to escalate, it is essential that charter schools are able to maintain their investments in teachers and other critical classroom inputs.
2. We request that the committee study moving the per pupil funding proviso for state charter schools to the general fund budget (EFA) as it had been in up until 2014. The total state charter proviso amount continues to grow and should be linked to the more consistent funding provided the general fund budget.
3. Similar to the state's FY17-18 budget, we request that there be 2 separate funding provisos -- 1 for the SCPCSD as the public statewide charter school district and 1 for other Institute of Higher Education (IHE) entities that authorize state charter schools. This will enable the legislature to hold individual authorizers accountable for their performance without impeding the expansion of school choice. In addition, this removes the risk of one authorizer's expansion or contraction from impacting the allocation to another authorizer.
4. We request that the student counts for the district include non-weighted counts for three- and four- year old students with disabilities that are being provided FAPE through charter schools in the SCPCSD.

Note: This budget request does not include the funding requirements for schools that are authorized by any Institute of Higher Education or any other LEA. It solely is a request for schools that are expected to be under the authorization of the SCPCSD in FY19-20.



SCPCSD FY19-20 Projected Funding by School

School Name	Projected FY20 ADM (Enrollment)	Projected FY20 WPU	Proviso Funding
Brashier Middle College	447	587	\$2,429,393
Bridges Preparatory School	838	953	\$3,945,213
Cape Romain Environmental Charter School	218	270	\$1,118,173
East Point Academy	662	755	\$3,125,783
Felton Laboratory Charter School	416	526	\$2,176,336
Fox Creek High School	720	967	\$4,005,326
GREEN Charter of the Midlands	499	601	\$2,489,092
GREEN Charter School	994	1,162	\$4,809,314
Greenville Technical Charter High School	440	589	\$2,440,240
Greer Middle College	450	575	\$2,380,003
High Point Academy	1,290	1,290	\$5,340,600
Lead Academy	405	535	\$2,215,355
Legacy Early College	1,430	2,053	\$8,498,882
Lowcountry Leadership Charter School	556	692	\$2,866,909
Lowcountry Montessori School	414	528	\$2,187,410
Meyer Center for Special Children	94	141	\$584,816
Midlands Middle College	110	143	\$593,842
NEXT High School	450	579	\$2,395,487
Palmetto Scholars Academy	520	642	\$2,656,058
PD Math, Science and Technology Academy	226	269	\$1,112,004
Quest Leadership Academy	286	393	\$1,627,393
Riverwalk Academy	500	634	\$2,626,457
South Carolina Connections Academy	5,299	7,164	\$15,653,406
South Carolina Whitmore School	405	547	\$1,195,901
Spartanburg Preparatory School	582	722	\$2,988,376
Tall Pines STEM Academy	192	218	\$900,698
York Preparatory Academy	1,680	1,951	\$8,077,057
Youth Leadership Academy	144	173	\$716,266
New Schools FY 19			
Charleston Acceleration Academy	225	244	\$1,008,090
Bettis Preparatory Academy	176	196	\$813,510
East Link Academy	204	228	\$944,500
Midlands Arts Conservatory	218	288	\$1,190,416
Polaris Technical	316	330	\$1,365,372
Lakes and Bridges	103	149	\$616,860
New Schools FY20			
GREEN Spartanburg	280	280	\$1,159,200
Renaissance Collegiate Academy	100	114	\$470,304
Grand Total	21,889	27,488	\$98,724,042